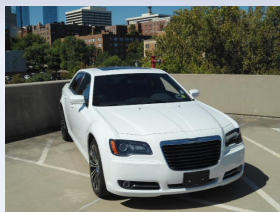


Welcome to White Plains Chrysler Jeep Dodge! Complete customer satisfaction is our Number One priority. We are committed to earning your trust. Our commitment begins the moment you walk into our Elite Five Star showroom and continues throughout each and every visit to our service department.

70 Westchester Ave • White Plains, NY 10601 •

## 2012 Chrysler 300 300S



Exterior Color: Bright White Clear Coat  
Mileage: 26,357

Stock #: U10345  
VIN: 2C3CCABG0CH193064

Engine: V6 Cylinder Engine  
Transmission: 8-Speed A/T  
Drive Train: RWD

### Equipment:

- |                                  |                        |                                |
|----------------------------------|------------------------|--------------------------------|
| ▪ Leather Seats                  | ▪ Navigation           | ▪ Panoramic Roof               |
| ▪ Heated Driver Seat             | ▪ Heated Rear Seat     | ▪ Premium Sound System         |
| ▪ Satellite Radio                | ▪ iPod/MP3 Input       | ▪ Bluetooth                    |
| ▪ Aluminum Wheels                | ▪ Remote Engine Start  | ▪ Dual Zone A/C                |
| ▪ MP3 Player                     | ▪ Remote Trunk Release | ▪ Keyless Entry                |
| ▪ Steering Wheel Controls        | ▪ Child Safety Locks   | ▪ Electronic Stability Control |
| ▪ Heated Mirrors                 | ▪ Bucket Seats         | ▪ Adjustable Pedals            |
| ▪ Electrochromic rearview mirror | ▪ Mirror Memory        | ▪ 4-Wheel ABS                  |

### Expert Reviews:

Edmunds.com: Comfortable ride; quiet interior; powerful engines; upscale interior materials; generous features list; high-quality sound systems; available all-wheel drive.

newCarTestDrive.com: A new, optional navigation system is the best we've ever seen, with a large, 8.4-inch screen that's easily understood at a glance and easy to operate. We highly recommend opting for it.

KBB.com: Among its competitors, including the Ford Taurus, Toyota Avalon and Buick LaCrosse, only the 2012 Chrysler 300 sedan offers the superior handling that comes from a rear-drive platform.

CarAndDriver.com: Redesigned last year, the big 300 sedan marches into 2012 with a new, more powerful offering—the 470-hp SRT8— and an eight-speed transmission for V-6 models.

### Vehicle History Highlights:

- |  |  |   |
|--|--|---|
| ▪ CARFAX Buy Back Guarantee            | ▪ CARFAX No Total Loss Reported        | ▪ CARFAX No Frame Damage Reported       |
| ▪ CARFAX No Airbag Deployment Reported | ▪ CARFAX No Odometer Rollback Reported | ▪ CARFAX No Accidents / Damage Reported |

### Ad Preview:

Chrysler Certified, LOW MILES - 26,357! FUEL EFFICIENT 31 MPG Hwy/19 MPG City! Nav System, Heated Leather Seats, Premium Sound System, Head Airbag, iPod/MP3 Input, Dual Zone A/C, Remote Engine Start, Bluetooth, LUXURY GROUP SEE MORE!=====KEY FEATURES ...

### CHRYSLER CERTIFIED PRE-OWNED VEHICLE (CPOV) FEATURES

- |  |   |
|--|---|
| ▪ 7-Year/100,000-Mile Powertrain warranty          | ▪ 3-Month/3,000-Mile Maximum Care Warranty    |
| ▪ Rigorous 125-Point Inspection and Reconditioning | ▪ 24-Hour Roadside Assistance, 24-Hour Towing |
| ▪ Carfax Vehicle History Report                    | ▪ Rental car Allowance                        |
| ▪ Lifetime Certified Warranty Upgrades Available   |   |

**Your Price \$23,490**

### 360° Pricing Analysis

(AS OF 12/8/2014)

YOUR PRICE IS:

**NADA**

NADA Retail Value

\$23,925

**\$435**

Below NADA Retail Value

## Comparison Cars in Market:

Vehicle	Color	Mileage	Certified?	Internet Price	Your Price Savings:
2012 Chrysler 300 Sedan 300S	Gray	23,546		\$29,995	You save \$6,505
No ad preview found.					
2012 Chrysler 300 Sedan 300S	Red	25,144		\$29,989	You save \$6,499
No ad preview found.					
2012 Chrysler 300 Sedan 300S	Black	32,255		\$27,995	You save \$4,505
No ad preview found.					
2012 Chrysler 300 Sedan 300S	Black	35,309	✓	\$27,943	You save \$4,453
Black 2012 Chrysler 300 S with a clean Carfax, Sirius XM radio, leather interior, built-in navigation, AWD, and more. In New Britain near Hartford. Ch					
2012 Chrysler 300 Sedan 300S	Gray	25,588		\$27,888	You save \$4,398
CALL US RIGHT NOW MORE INFORMATION OR SEND US A TEXT ON OUR INSTANT TEXT HELP LINE!!!					
2012 Chrysler 300 Sedan 300S	Black	25,499		\$26,998	You save \$3,508
Only the best used cars are selected to become CarMax cars - just 1 in 3 that we evaluate meets our high standards for quality. We then invest time an					
2012 Chrysler 300 Sedan 300S	Gray	13,507		\$26,995	You save \$3,505
-LOW MILES- PRICED BELOW MARKET! INTERNET SPECIAL! -THOROUGHLY INSPECTED, CERTIFIED VEHICLE- -CARFAX ONE OWNER- OIL CHANGED, NEW WIPER BLADES, AND 125					
2012 Chrysler 300 Sedan 300S	Gray	45,560	✓	\$23,589	You save \$99
Security Dodge is excited to offer this 2012 Chrysler 300. This Chrysler includes: UCONNECT TOUCH 8.4N Navigation System AM/FM Stereo MP3 Player CD PI					

### *JDPower.com Power Circle Ratings*

Power Circle Ratings (the Ratings) are developed by J.D. Power and Associates for JDPower.com. All Ratings are based on the opinions of consumers who have actually used or owned the product or service being rated. Since the Ratings are based on J.D. Power and Associates research studies that survey a representative sample of owners, they are indicative of what typical buyers may experience.

High ratings for a particular product/service/company do not necessarily mean that every customer will have a positive experience. It simply indicates that, on average, consumer perceptions of the product/service/company indicate that it stands out when compared with competitive products/services/companies.

### *Expert Reviews*

Expert Reviews are excerpts from reviews and automotive awards from sites across the internet. The sites include newCarTestDrive.com, Edmunds.com and other similar sites.

The positive Expert Reviews are only excerpts of the full article or review. The full article may contain additional comments, both positive and negative, regarding the vehicle. For a more complete understanding of the scope of the review, you should read the entire review or award, which can be obtained from the referenced site.

### *NADA Used Car Guide - Retail Value*

Actual valuations for 2012 Chrysler 300 300S with 26,357 miles will vary based upon optional equipment selected by the dealer, market conditions, specifications, vehicle condition or other particular circumstances pertinent to this vehicle. The specific information required to determine the value for this vehicle is based on your dealer's location, state - NY, for December and NADA Used Car Guide. NADA Used Car Guide vehicle valuations may vary from vehicle to vehicle. While the NADA Used Car Guide does take into account many variables related to the vehicle beyond make, model and geographic location, it does not account for the particular condition or circumstances of this vehicle which could cause the value of the vehicle to vary significantly from the NADA Used Car Guide - Retail Value.

### *Edmunds True Market Value (TMV)*

Actual valuations for 2012 Chrysler 300 300S with 26,357 miles will vary based upon optional equipment selected by the dealer, market conditions, specifications, vehicle condition or other particular circumstances pertinent to this vehicle. Edmunds TMV price is an estimate of the current average selling price transactions for 2012 Chrysler 300 300S with 26,357 miles based on optional equipment and vehicle color based on your dealer's location, zipcode - 10601. Edmunds TMV vehicle valuations may vary from vehicle to vehicle. While the Edmunds TMV does take into account many variables related to the vehicle beyond make, model and geographic location, it does not account for the particular condition or circumstances of this vehicle which could cause the value of the vehicle to vary significantly from the Edmunds True Market Value.

---

CONSUMER IS RESPONSIBLE FOR VERIFYING ALL EQUIPMENT.

INCISENT TECHNOLOGIES DEPENDS ON ITS SOURCES FOR THE ACCURACY AND RELIABILITY OF ITS INFORMATION. THEREFORE, NO RESPONSIBILITY IS ASSUMED BY INCISENT TECHNOLOGIES OR ITS AGENTS FOR ERRORS OR OMISSIONS IN THIS REPORT. INCISENT TECHNOLOGIES FURTHER EXPRESSLY DISCLAIMS ALL WARRANTIES, EXPRESS OR IMPLIED, INCLUDING ANY IMPLIED WARRANTIES OF MERCHANTABILITY OR FITNESS FOR A PARTICULAR PURPOSE.

ALL INFORMATION RELATED TO THE SOURCES ABOVE WAS ASSEMBLED BY WHITE PLAINS CARS AND NO RESPONSIBILITY IS ASSUMED BY INCISENT TECHNOLOGIES OR ITS AGENTS FOR ERRORS OR OMISSIONS OF THE ASSEMBLED DATA.

© 2010 INCISENT Technologies, LLC. All rights reserved. 12/8/2014