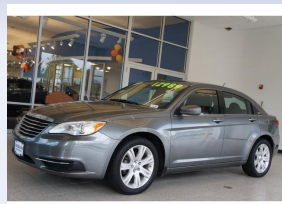


AutoFair Honda of Plymouth in Plymouth, MA treats the needs of each individual customer with paramount concern. We know that you have high expectations, and as a car dealer we enjoy the challenge of meeting and exceeding those expectations each and every time. Allow us to demonstrate our commitment to excellence!

9 Long Pond Road • Plymouth, MA 02360 •

2013 Chrysler 200 LX



Exterior Color: Tungsten Metallic
Mileage: 36,011

Stock #: 73875B
VIN: 1C3CCBAB1DN670752

Engine: 2.4L 4 Cylinder Engine
Transmission: Automatic
Drive Train: FWD

Equipment:

- iPod/MP3 Input
- Remote Trunk Release
- Steering Wheel Controls
- Bucket Seats
- Tire Pressure Monitoring System
- Rear Head Air Bag
- Passenger Air Bag
- Auto-Off Headlights
- CD Player
- Keyless Entry
- Electronic Stability Control
- 4-Wheel ABS
- Vehicle Anti-Theft System
- 4-Speed A/T
- Driver Air Bag
- Cruise Control
- MP3 Player
- Child Safety Locks
- Heated Mirrors
- 4-Wheel Disc Brakes
- Side Head Air Bag
- A/C
- Wheel Covers
- Power Windows

Expert Reviews:

Edmunds.com: Lots of features for the price; strong V6 engine; composed ride and handling.

KBB.com: Sweeping, richly-textured, soft-touch surfaces display fewer seams but more chrome and metallic trim, elevating the 2013 Chrysler 200's cabin to Business Class if not First.

CarAndDriver.com: Better than the Sebring it replaced, attractive exterior, strong V-6 option.

Vehicle History Highlights:

- CARFAX 1-Owner
- CARFAX No Frame Damage Reported
- CARFAX Buy Back Guarantee
- CARFAX No Airbag Deployment Reported
- CARFAX No Total Loss Reported
- CARFAX No Odometer Rollback Reported

Ad Preview:

CARFAX 1-Owner, Excellent Condition. LX trim, Tungsten Metallic exterior and Black interior. EPA 31 MPG Hwy/20 MPG City!, PRICED TO MOVE \$1,900 below NADA Retail! CD Player, iPod/MP3 Input, Overhead Airbag. SEE MORE!=====KEY FEATURES INCLUDE: iPod/MP3 ...

Your Price \$12,789

360° Pricing Analysis			
(AS OF 9/29/2014)		YOUR PRICE IS:	
	Market Average Internet Price	\$13,940	\$1,151 Below Market Average Internet Price
	NADA Retail Value	\$14,775	\$1,986 Below NADA Retail Value

Comparison Cars in Market:

Vehicle	Color	Mileage	Certified?	Internet Price	Your Price Savings:
2013 Chrysler 200 Sedan LX	Unknown	34,915		\$15,995	You save \$3,206
2013 Chrysler 200 LX Sedan					

2013 Chrysler 200 Sedan LX	Unknown	42,710		\$15,000	You save \$2,211
Used 2013 Chrysler 200 4dr Sdn LX					
2013 Chrysler 200 Sedan LX	Unknown	32,288		\$14,995	You save \$2,206
2013 Chrysler 200 LX Sedan					
2013 Chrysler 200 Sedan LX	Unknown	34,100		\$14,995	You save \$2,206
2013 Chrysler 200 LX Sedan					
2013 Chrysler 200 Sedan LX	Gray	35,076		\$14,989	You save \$2,200
No ad preview found.					
2013 Chrysler 200 Sedan LX	Silver	29,228		\$14,988	You save \$2,199
Used 2013 Chrysler 200 LX					
2013 Chrysler 200 Sedan LX	Unknown	34,769		\$14,695	You save \$1,906
2013 Chrysler 200 LX Sedan					
2013 Chrysler 200 Sedan LX	Brown	25,781		\$14,223	You save \$1,434
2013 Chrysler 200 LX Sedan					
2013 Chrysler 200 Sedan LX	Unknown	39,162		\$14,000	You save \$1,211
Used 2013 Chrysler 200 4dr Sdn LX					
2013 Chrysler 200 Sedan LX	Unknown	30,780		\$13,998	You save \$1,209
2013 Chrysler 200 LX Sedan					

JDPower.com Power Circle Ratings

Power Circle Ratings (the Ratings) are developed by J.D. Power and Associates for JDPower.com. All Ratings are based on the opinions of consumers who have actually used or owned the product or service being rated. Since the Ratings are based on J.D. Power and Associates research studies that survey a representative sample of owners, they are indicative of what typical buyers may experience.

High ratings for a particular product/service/company do not necessarily mean that every customer will have a positive experience. It simply indicates that, on average, consumer perceptions of the product/service/company indicate that it stands out when compared with competitive products/services/companies.

Expert Reviews

Expert Reviews are excerpts from reviews and automotive awards from sites across the internet. The sites include newCarTestDrive.com, Edmunds.com and other similar sites.

The positive Expert Reviews are only excerpts of the full article or review. The full article may contain additional comments, both positive and negative, regarding the vehicle. For a more complete understanding of the scope of the review, you should read the entire review or award, which can be obtained from the referenced site.

NADA Used Car Guide - Retail Value

Actual valuations for 2013 Chrysler 200 LX with 36,011 miles will vary based upon optional equipment selected by the dealer, market conditions, specifications, vehicle condition or other particular circumstances pertinent to this vehicle. The specific information required to determine the value for this vehicle is based on your dealer's location, state - MA, for September and NADA Used Car Guide. NADA Used Car Guide vehicle valuations may vary from vehicle to vehicle. While the NADA Used Car Guide does take into account many variables related to the vehicle beyond make, model and geographic location, it does not account for the particular condition or circumstances of this vehicle which could cause the value of the vehicle to vary significantly from the NADA Used Car Guide - Retail Value.

Edmunds True Market Value (TMV)

Actual valuations for 2013 Chrysler 200 LX with 36,011 miles will vary based upon optional equipment selected by the dealer, market conditions, specifications, vehicle condition or other particular circumstances pertinent to this vehicle. Edmunds TMV price is an estimate of the current average selling price transactions for 2013 Chrysler 200 LX with 36,011 miles based on optional equipment and vehicle color based on your dealer's location, zipcode - 02360. Edmunds TMV vehicle valuations may vary from vehicle to vehicle. While the Edmunds TMV does take into account many variables related to the vehicle beyond make, model and geographic location, it does not account for the particular condition or circumstances of this vehicle which could cause the value of the vehicle to vary significantly from the Edmunds True Market Value.

Average Market Price

Average Market Price is calculated based on sampling of listings based on your dealer's zipcode, 02360. The source of the listings is third-party sites and dealer websites containing preowned and new vehicles. Average Market Price values may vary from vehicle to vehicle. Actual valuations for 2013 Chrysler 200 LX with 36,011 miles will vary based upon selected optional equipment, market conditions, specifications, vehicle condition or other particular circumstances pertinent to this vehicle. While the average market price is an average of similar 2013 Chrysler 200 LX and 50 miles radius from dealership, based on your dealer's zipcode (02360), the average can include vehicles with different trims, mileage ranges and dissimilar vehicle equipment. The sample of market listings may not represent all relevant vehicles available in the area searched.

Comparison Cars in Market

Comparison Cars in Market is created based on a select set of dealer classified listings from over forty thousand dealers nationally. The source of the listings is third-party sites and dealer websites containing preowned and new vehicles. While comparison cars are from similar vehicles based on year, manufacturer, model and 50 miles radius from dealership, based on your dealer's zipcode (02360), the comparison can include different trims, mileage ranges and dissimilar vehicle equipment. The dealer has full discretion in selecting the comparison cars, and may choose vehicles with different levels of trim and additional optional equipment. As a consequence, the comparison cars may not be comparable to the vehicle you are considering. The Comparison Cars in Market are based on the sample market listings available from various Internet data sources and may not represent all relevant vehicles available in the area searched.

CONSUMER IS RESPONSIBLE FOR VERIFYING ALL EQUIPMENT.

INCIDENT TECHNOLOGIES DEPENDS ON ITS SOURCES FOR THE ACCURACY AND RELIABILITY OF ITS INFORMATION. THEREFORE, NO RESPONSIBILITY IS ASSUMED BY INCIDENT TECHNOLOGIES OR ITS AGENTS FOR ERRORS OR OMISSIONS IN THIS REPORT. INCIDENT TECHNOLOGIES FURTHER EXPRESSLY DISCLAIMS ALL WARRANTIES, EXPRESS OR IMPLIED, INCLUDING ANY IMPLIED WARRANTIES OF MERCHANTABILITY OR FITNESS FOR A PARTICULAR PURPOSE.

ALL INFORMATION RELATED TO THE SOURCES ABOVE WAS ASSEMBLED BY AUTOFAIR HONDA OF PLYMOUTH AND NO RESPONSIBILITY IS ASSUMED BY INCIDENT TECHNOLOGIES OR ITS AGENTS FOR ERRORS OR OMISSIONS OF THE ASSEMBLED DATA.

© 2010 INCIDENT Technologies, LLC. All rights reserved. 9/29/2014